



# BEACON FEN ENERGY PARK

Planning Inspectorate Reference: EN010151

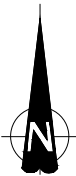
Figure 6.32 Vegetation Removal Plan Part 3 (Change Request)

Document Reference: 6.4. ES Volume 3, 6.4.43c

December 2025







DO NOT SCALE FROM THIS DRAWING

- KEY
- DCO Order Limits
  - Existing Trees / Vegetation
  - Existing Hedgerows to be retained and enhanced
  - Important Hedgerow
  - Proposed Hedgerow
  - Existing Ponds / Waterbodies
  - Proposed Fence
  - Proposed Access Track
  - Root Protection Area
  - Existing Vegetation to be potentially removed
  - Vegetation in highway outside the Applicant's control (Bicker Fen Substation)
  - Vegetation to be potentially temporarily removed and then reinstated (Bicker Fen Substation)
  - Overhead HV electricity

Notes:  
Vegetation removal within Bespoke Access Route and Cable Route Corridor shown on this plan is based on the current scheme design and alignment. Final details to be confirmed at detailed design stage.

Excluding the DCO order limits, boundaries shown are inticative.

DCO order limits provided by Ardent Management on 04/02/2025.

Layout of Solar Panels taken from skyray drawing LCA-2023-01-BeaconFen\_Works Plan B Rev B dated 25/02/25.

© Crown Copyright and database rights 2025 Ordnance Survey AC0000808122

5	Revised proposed hedgerows. Attributes amended	11/12/25	MA8	DS	DS
4	Various amendments to attributes (colour, etc)	03/12/25	MA8	DS	DS
3	QA Checks	16/10/25	SC	DS	DS
2	RETAINED VEGETATION AMENDMENT	07/10/25	SC	DS	DS
P1	FIRST ISSUE	03/04/25	SC	DS	DS
REVISION		DATE	DRAWN	CHECKD	APPROD

CLIENT

BEACON FEN ENERGY PARK LTD

PROJECT

BEACON FEN ENERGY PARK

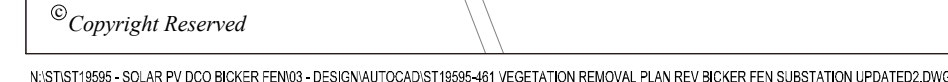
DRAWING TITLE

FIGURE 6.32  
VEGETATION REMOVAL PLAN  
(CABLE ROUTE CORRIDOR)

DRG No.	ST19595-461	REV	5	SUIT. CODE	
DRG SIZE	A1	SCALE	1:150,000	DATE	03/04/2025
DRAWN BY	SC	CHECKED BY	DS	APPROVED BY	DS

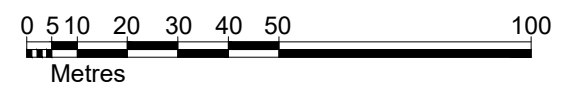






wardell  
armstrong

PART OF  SLR







DO NOT SCALE FROM THIS DRAWING

KEY

DCO Order Limits

Existing Trees / Vegetation

Existing Hedgerows to be retained and enhanced

Important Hedgerow

Proposed Hedgerow

Existing Ponds / Waterbodies

Proposed Fence

Proposed Access Track

Root Protection Area

Existing Vegetation to be potentially removed

Vegetation in highway outside the Applicant's control (Bicker Fen Substation)

Vegetation to be potentially temporarily removed and then reinstated (Bicker Fen Substation)

Overhead HV electricity

Notes:

Vegetation removal within Bespoke Access Route and Cable Route Corridor shown on this plan is based on the current scheme design and alignment. Final details to be confirmed at detailed design stage.

Excluding the DCO order limits, boundaries shown are inticative.

DCO order limits provided by Ardent Management on 04/02/2025.

Layout of Solar Panels taken from skyray drawing LCA-2023-01-BeaconFen\_Works Plan B Rev B dated 25/02/25.

© Crown Copyright and database rights 2025 Ordnance Survey AC0000808122

SHEET OVERVIEW  
(SCALE 1:125,000)

5	Revised proposed hedgerows. Attributes amended	11/12/25	MMB	DS	DS
4	Various amendments to attributes (colour, etc)	03/12/25	MMB	DS	DS
3	QA Checks	16/10/25	SC	DS	DS
2	RETAINED VEGETATION AMENDMENT	07/10/25	SC	DS	DS
P1	FIRST ISSUE	03/04/25	SC	DS	
REVISION	DETAILS	DATE	DRAWN	CHECKD	APPROV

CLIENT

BEACON FEN ENERGY PARK LTD

PROJECT

BEACON FEN ENERGY PARK

DRAWING TITLE

FIGURE 6.32  
VEGETATION REMOVAL PLAN  
(Sheet 17 OF 26)

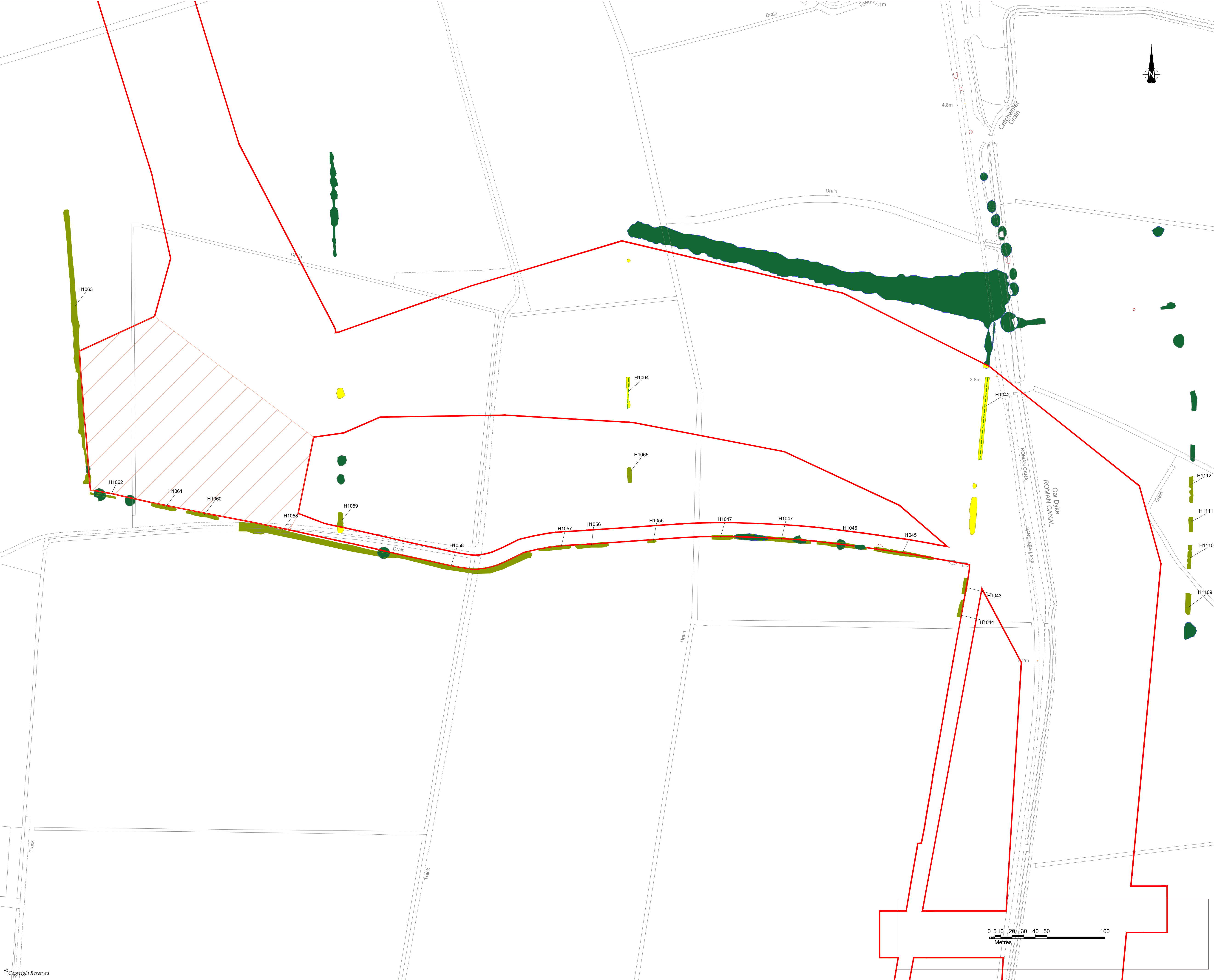
DRG No.	ST19595-461	REV	5	SUIT. CODE	
DRG SIZE	A1	SCALE	1:1,500	DATE	03/04/2025
DRAWN BY	SC	CHECKED BY	DS	APPROVED BY	DS

wardell  
armstrong

PART OF SLR

© Copyright Reserved  
N:\ST19595-SOLAR PV DCO BECKER FEN\03-DESIGN\AUTOCAD\ST19595-461-VEGETATION REMOVAL PLAN REV BECKER FEN SUBSTATION UPDATED.DWG





DO NOT SCALE FROM THIS DRAWING

KEY

DCO Order Limits

Existing Trees / Vegetation

Existing Hedgerows to be retained and enhanced

Important Hedgerow

Proposed Hedgerow

Existing Ponds / Waterbodies

Proposed Fence

Proposed Access Track

Root Protection Area

Existing Vegetation to be potentially removed

Vegetation in highway outside the Applicant's control (Bicker Fen Substation)

Vegetation to be potentially temporarily removed and then reinstated (Bicker Fen Substation)

Overhead HV electricity

Notes:

Vegetation removal within Bespoke Access Route and Cable Route Corridor shown on this plan is based on the current scheme design and alignment. Final details to be confirmed at detailed design stage.

Excluding the DCO order limits, boundaries shown are inticative.

DCO order limits provided by Ardent Management on 04/02/2025.

Layout of Solar Panels taken from skyray drawing LCA-2023-01-BeaconFen\_Works Plan B Rev B dated 25/02/25.

© Crown Copyright and database rights 2025 Ordnance Survey AC0000808122

SHEET OVERVIEW  
(SCALE 1:125,000)

5	Revised proposed hedgerows. Attributes amended	11/12/25	MAH	DS	DS
4	Various amendments to attributes (colour, etc)	03/12/25	MAH	DS	DS
3	QA Checks	16/10/25	SC	DS	DS
2	RETAINED VEGETATION AMENDMENT	07/10/25	SC	DS	DS
P1	FIRST ISSUE	03.04.25	SC	DS	
REVISION		DATE	DRAWN	CHECKD	APPRO

CLIENT

BEACON FEN ENERGY PARK LTD

PROJECT

BEACON FEN ENERGY PARK

DRAWING TITLE

FIGURE 6.32  
VEGETATION REMOVAL PLAN  
(Sheet 18 OF 26)

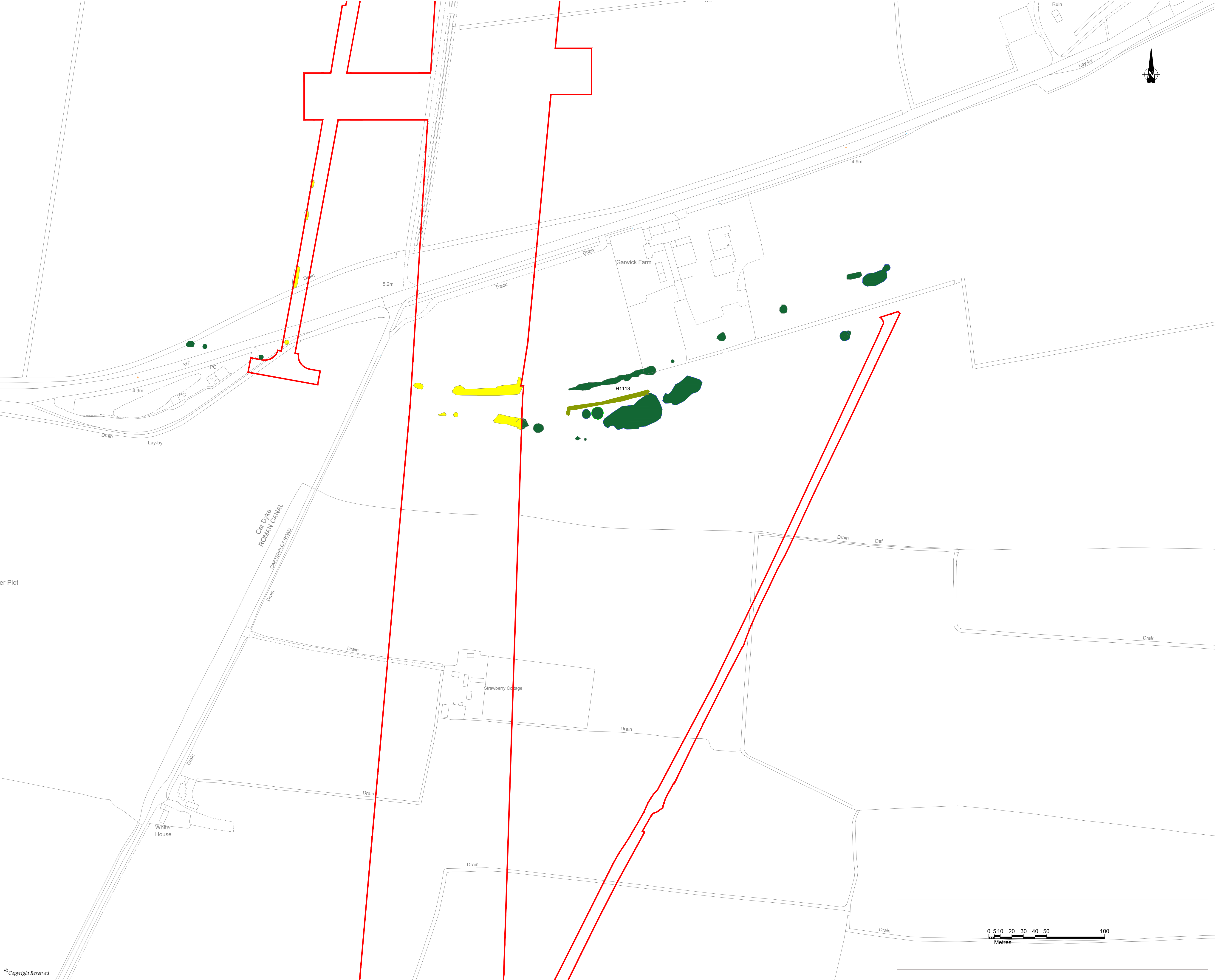
DRG No.	ST19595-461		REV	5	SUIT. CODE
DRG SIZE	A1	SCALE	1:1,500	DATE	03/04/2025
DRAWN BY	SC	CHECKED BY	DS	APPROVED BY	DS

wardell  
armstrong

PART OF SLR

© Copyright Reserved  
N:\ST19595-SOLAR PV DCO BECKER FEN\03-DESIGN\AUTOCAD\ST19595-461-VEGETATION REMOVAL PLAN REV BECKER FEN SUBSTATION UPDATED.DWG





DO NOT SCALE FROM THIS DRAWING

- KEY
- DCO Order Limits
  - Existing Trees / Vegetation
  - Existing Hedgerows to be retained and enhanced
  - Important Hedgerow
  - Proposed Hedgerow
  - Existing Ponds / Waterbodies
  - Proposed Fence
  - Proposed Access Track
  - Root Protection Area
  - Existing Vegetation to be potentially removed
  - Vegetation in highway outside the Applicant's control (Bicker Fen Substation)
  - Vegetation to be potentially temporarily removed and then reinstated (Bicker Fen Substation)
  - Overhead HV electricity

Notes:  
Vegetation removal within Bespoke Access Route and Cable Route Corridor shown on this plan is based on the current scheme design and alignment. Final details to be confirmed at detailed design stage.

Excluding the DCO order limits, boundaries shown are inticative.

DCO order limits provided by Ardent Management on 04/02/2025.

Layout of Solar Panels taken from skyray drawing LCA-2023-01-BeaconFen\_Works Plan B Rev B dated 25/02/25.

© Crown Copyright and database rights 2025 Ordnance Survey AC0000808122

SHEET OVERVIEW  
(SCALE 1:125,000)



5	Revised proposed hedgerows. Attributes amended	11/12/25	MAH	DS	DS
4	Various amendments to attributes (colour, etc)	03/12/25	MAH	DS	DS
3	QA Checks	16/10/25	SC	DS	DS
2	RETAINED VEGETATION AMENDMENT	07/10/25	SC	DS	DS
P1	FIRST ISSUE	03.04.25	SC	DS	DS
REVISION		DATE	DRAWN	CHECKD	APPROD

BEACON FEN ENERGY PARK LTD

BEACON FEN ENERGY PARK

FIGURE 6.32  
VEGETATION REMOVAL PLAN  
(Sheet 19 OF 26)

DRG No.	ST19595-461	REV	5	SUIT. CODE	
DRG SIZE	A1	SCALE	1:1,500	DATE	03/04/2025
DRAWN BY	SC	CHECKED BY	DS	APPROVED BY	DS







DO NOT SCALE FROM THIS DRAWING

KEY

DCO Order Limits

Existing Trees / Vegetation

Existing Hedgerows to be retained and enhanced

Important Hedgerow

Proposed Hedgerow

Existing Ponds / Waterbodies

Proposed Fence

Proposed Access Track

Root Protection Area

Existing Vegetation to be potentially removed

Vegetation in highway outside the Applicant's control (Bicker Fen Substation)

Vegetation to be potentially temporarily removed and then reinstated (Bicker Fen Substation)

Overhead HV electricity

Notes:

Vegetation removal within Bespoke Access Route and Cable Route Corridor shown on this plan is based on the current scheme design and alignment. Final details to be confirmed at detailed design stage.

Excluding the DCO order limits, boundaries shown are inticative.

DCO order limits provided by Ardent Management on 04/02/2025.

Layout of Solar Panels taken from skyray drawing LCA-2023-01-BeaconFen\_Works Plan B Rev B dated 25/02/25.

© Crown Copyright and database rights 2025 Ordnance Survey AC0000808122

SHEET OVERVIEW  
(SCALE 1:125,000)

4	Various amendments to attributes (colour, etc)	03/10/25	MAH	DS	DS
3	QA Checks	16/10/25	SC	DS	DS
2	RETAINED VEGETATION AMENDMENT	07/10/25	SC	DS	DS
P1	FIRST ISSUE	03.04.25	SC	DS	DS
REVISION	DETAILS	DATE	DRAWN	CHECKD	APPRO

CLIENT

BEACON FEN ENERGY PARK LTD

PROJECT

BEACON FEN ENERGY PARK

DRAWING TITLE

FIGURE 6.32  
VEGETATION REMOVAL PLAN  
(Sheet 20 OF 26)

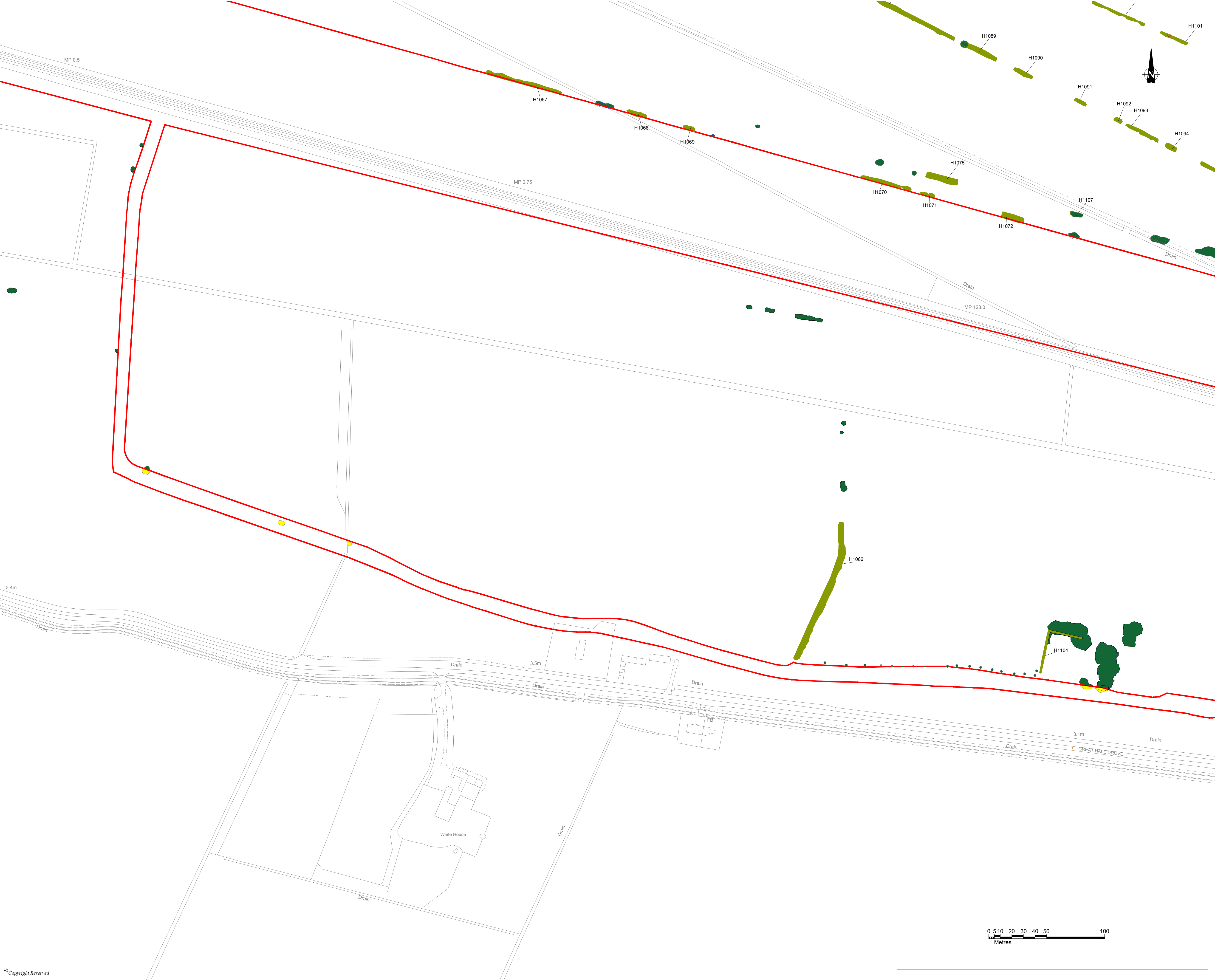
DRG No.	ST19595-461	REV	5	SUIT_CODE	
DRG SIZE	A1	SCALE	1:1,500	DATE	03/04/2025
DRAWN BY	SC	CHECKED BY	DS	APPROVED BY	DS

wardell  
armstrong

PART OF SLR

© Copyright Reserved  
N:\ST19595-SOLAR PV\DCO BECKER FEN\03-DESIGN\AUTOCAD\ST19595-461-VEGETATION REMOVAL PLAN REV BECKER FEN SUBSTATION UPDATED.DWG





DO NOT SCALE FROM THIS DRAWING

KEY

DCO Order Limits

Existing Trees / Vegetation

Existing Hedgerows to be retained and enhanced

Important Hedgerow

Proposed Hedgerow

Existing Ponds / Waterbodies

Proposed Fence

Proposed Access Track

Root Protection Area

Existing Vegetation to be potentially removed

Vegetation in highway outside the Applicant's control (Bicker Fen Substation)

Vegetation to be potentially temporarily removed and then reinstated (Bicker Fen Substation)

Overhead HV electricity

Notes:

Vegetation removal within Bespoke Access Route and Cable Route Corridor shown on this plan is based on the current scheme design and alignment. Final details to be confirmed at detailed design stage.

Excluding the DCO order limits, boundaries shown are inticative.

DCO order limits provided by Ardent Management on 04/02/2025.

Layout of Solar Panels taken from skyray drawing LCA-2023-01-BeaconFen\_Works Plan B Rev B dated 25/02/25.

© Crown Copyright and database rights 2025 Ordnance Survey AC0000808122

SHEET OVERVIEW  
(SCALE 1:125,000)

5	Revised proposed hedgerows. Attributes amended	11/12/25	MAH	DS	DS
4	Various amendments to attributes (colour, etc)	03/12/25	MAH	DS	DS
3	QA Checks	16/10/25	SC	DS	DS
2	RETAINED VEGETATION AMENDMENT	07/10/25	SC	DS	DS
P1	FIRST ISSUE	03.04.25	SC	DS	DS

REVISION	DETAILS	DATE	DRAWN	CHECKD	APPRO
CLIENT					

BEACON FEN ENERGY PARK LTD

PROJECT

BEACON FEN ENERGY PARK

DRAWING TITLE

FIGURE 6.32  
VEGETATION REMOVAL PLAN  
(Sheet 21 OF 26)

DRG No.	ST19595-461		REV	5	SUIT. CODE
DRG SIZE	A1	SCALE	1:1,500	DATE	03/04/2025
DRAWN BY	SC	CHECKED BY	DS	APPROVED BY	DS

wardell  
armstrong

PART OF SLR

0 5 10 20 30 40 50 100

Metres

© Copyright Reserved

N:\ST11895 - SOLAR PV DCO BECKER FEN\03 - DESIGN\AUTOCAD\ST11895-461 VEGETATION REMOVAL PLAN REV BECKER FEN SUBSTATION UPDATED.DWG





DO NOT SCALE FROM THIS DRAWING

KEY

DCO Order Limits

Existing Trees / Vegetation

Existing Hedgerows to be retained and enhanced

Important Hedgerow

Proposed Hedgerow

Existing Ponds / Waterbodies

Proposed Fence

Proposed Access Track

Root Protection Area

Existing Vegetation to be potentially removed

Vegetation in highway outside the Applicant's control (Bicker Fen Substation)

Vegetation to be potentially temporarily removed and then reinstated (Bicker Fen Substation)

Overhead HV electricity

Notes:

Vegetation removal within Bespoke Access Route and Cable Route Corridor shown on this plan is based on the current scheme design and alignment. Final details to be confirmed at detailed design stage.

Excluding the DCO order limits, boundaries shown are inticative.

DCO order limits provided by Ardent Management on 04/02/2025.

Layout of Solar Panels taken from skyray drawing LCA-2023-01-BeaconFen\_Works Plan B Rev B dated 25/02/25.

© Crown Copyright and database rights 2025 Ordnance Survey AC0000808122

SHEET OVERVIEW  
(SCALE 1:125,000)

5	Revised proposed hedgerows. Attributes amended	11/12/25	MAB	DS	DS
4	Various amendments to attributes (colour, etc)	03/10/25	MAB	DS	DS
3	QA Checks	16/10/25	SC	DS	DS
2	RETAINED VEGETATION AMENDMENT	07/10/25	SC	DS	DS
P1	FIRST ISSUE	03.04.25	SC	DS	
REVISION	DETAILS	DATE	DRAWN	CHECKD	APPROD

CLIENT

BEACON FEN ENERGY PARK LTD

PROJECT

BEACON FEN ENERGY PARK

DRAWING TITLE

FIGURE 6.32  
VEGETATION REMOVAL PLAN  
(Sheet 22 OF 26)

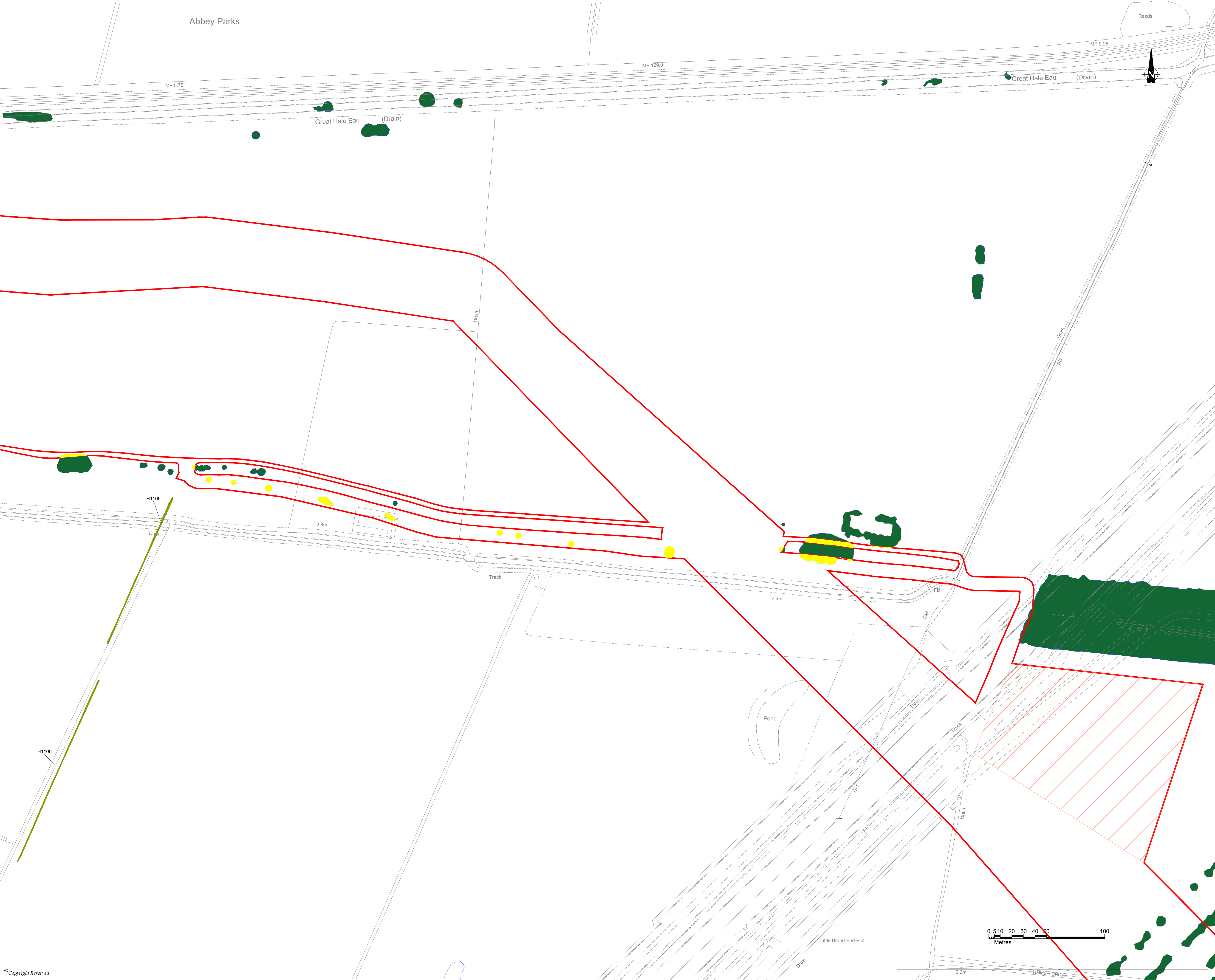
DRG No.	ST19595-461	REV	5	SUIT. CODE	
DRG SIZE	A1	SCALE	1:1,500	DATE	03/04/2025
DRAWN BY	SC	CHECKED BY	DS	APPROVED BY	DS

wardell  
armstrong

PART OF SLR

© Copyright Reserved  
N:\ST11895-SOLAR PV DCO BECKER FEN\03-DESIGN\AUTOCAD\ST11895-461-VEGETATION REMOVAL PLAN REV BECKER FEN SUBSTATION UPDATED.DWG





DO NOT SCALE FROM THIS DRAWING

KEY

DCO Order Limits

Existing Trees / Vegetation

Existing Hedgerows to be retained and enhanced

Important Hedgerow

Proposed Hedgerow

Existing Ponds / Waterbodies

Proposed Fence

Proposed Access Track

Root Protection Area

Existing Vegetation to be potentially removed

Vegetation in highway outside the Applicant's control (Bicker Fen Substation)

Vegetation to be potentially temporarily removed and then reinstated (Bicker Fen Substation)

Overhead HV electricity

Notes:

Vegetation removal within Bespoke Access Route and Cable Route Corridor shown on this plan is based on the current scheme design and alignment. Final details to be confirmed at detailed design stage.

Excluding the DCO order limits, boundaries shown are inticative.

DCO order limits provided by Ardent Management on 04/02/2025.

Layout of Solar Panels taken from skyray drawing LCA-2023-01-BeaconFen\_Works Plan B Rev B dated 25/02/25.

© Crown Copyright and database rights 2025 Ordnance Survey AC0000808122

SHEET OVERVIEW  
(SCALE 1:125,000)

5	Revised proposed hedgerows. Attributes amended	11/12/25	MA8	DS	DS
4	Various amendments to attributes (colour, etc)	03/12/25	MA8	DS	DS
3	QA Checks	16/10/25	SC	DS	DS
2	RETAINED VEGETATION AMENDMENT	07/10/25	SC	DS	DS
P1	FIRST ISSUE	03.04.25	SC	DS	
REVISION	DETAILS	DATE	DRAWN	CHECKD	APPRO

CLIENT

BEACON FEN ENERGY PARK LTD

PROJECT

BEACON FEN ENERGY PARK

DRAWING TITLE

FIGURE 6.32  
VEGETATION REMOVAL PLAN  
(Sheet 23 OF 26)

DRG No.	ST19595-461	REV	5	SUIT. CODE	
DRG SIZE	A1	SCALE	1:1,500	DATE	03/04/2025
DRAWN BY	SC	CHECKED BY	DS	APPROVED BY	DS

PART OF SLR

© Copyright Reserved  
N:\ST19595-SOLAR PV DCO BECKER FEN\03-DESIGN\AUTOCAD\ST19595-461-VEGETATION REMOVAL PLAN REV BECKER FEN SUBSTATION UPDATED.DWG





DO NOT SCALE FROM THIS DRAWING

- KEY
- DCO Order Limits
  - Existing Trees / Vegetation
  - Existing Hedgerows to be retained and enhanced
  - Important Hedgerow
  - Proposed Hedgerow
  - Existing Ponds / Waterbodies
  - Proposed Fence
  - Proposed Access Track
  - Root Protection Area
  - Existing Vegetation to be potentially removed
  - Vegetation in highway outside the Applicant's control (Bicker Fen Substation)
  - Vegetation to be potentially temporarily removed and then reinstated (Bicker Fen Substation)
  - Overhead HV electricity

Notes:  
Vegetation removal within Bespoke Access Route and Cable Route Corridor shown on this plan is based on the current scheme design and alignment. Final details to be confirmed at detailed design stage.

Excluding the DCO order limits, boundaries shown are inticative.

DCO order limits provided by Ardent Management on 04/02/2025.

Layout of Solar Panels taken from skyray drawing LCA-2023-01-BeaconFen\_Works Plan B Rev B dated 25/02/25.

© Crown Copyright and database rights 2025 Ordnance Survey AC0000808122

SHEET OVERVIEW  
(SCALE 1:125,000)



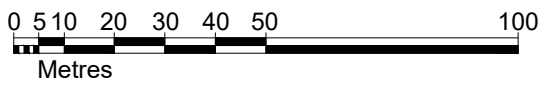
5	Revised proposed hedgerows. Attributes amended	11/12/25	MAH	DS	DS
4	Various amendments to attributes (colour, etc)	03/12/25	MAH	DS	DS
3	QA Checks	16/10/25	SC	DS	DS
2	RETAINED VEGETATION AMENDMENT	07/10/25	SC	DS	DS
P1	FIRST ISSUE	03.04.25	SC	DS	
REVISION		DATE	DRAWN	CHECKD	APPROV

BEACON FEN ENERGY PARK LTD

BEACON FEN ENERGY PARK

FIGURE 6.32  
VEGETATION REMOVAL PLAN  
(Sheet 24 OF 26)

DRG No.	ST19595-461	REV	5	SUIT. CODE	
DRG SIZE	A1	SCALE	1:1,500	DATE	03/04/2025
DRAWN BY	SC	CHECKED BY	DS	APPROVED BY	DS







DO NOT SCALE FROM THIS DRAWING

KEY

DCO Order Limits

Existing Trees / Vegetation

Existing Hedgerows to be retained and enhanced

Important Hedgerow

Proposed Hedgerow

Existing Ponds / Waterbodies

Proposed Fence

Proposed Access Track

Root Protection Area

Existing Vegetation to be potentially removed

Vegetation in highway outside the Applicant's control (Bicker Fen Substation)

Vegetation to be potentially temporarily removed and then reinstated (Bicker Fen Substation)

Overhead HV electricity

Notes:

Vegetation removal within Bespoke Access Route and Cable Route Corridor shown on this plan is based on the current scheme design and alignment. Final details to be confirmed at detailed design stage.

Excluding the DCO order limits, boundaries shown are inticative.

DCO order limits provided by Ardent Management on 04/02/2025.

Layout of Solar Panels taken from skyray drawing LCA-2023-01-BeaconFen\_Works Plan B Rev B dated 25/02/25.

© Crown Copyright and database rights 2025 Ordnance Survey AC0000808122

SHEET OVERVIEW  
(SCALE 1:125,000)

5

Revised proposed hedgerows. Attributes amended

11/12/25

MM

DS

DS

4

Various amendments to attributes (colour, etc) Amendments to Bicker Fen Substation vegetation removals

03/12/25

MM

DS

DS

3

QA Checks

16/10/25

SC

DS

DS

2

Retained vegetation amendment

07/10/25

SC

DS

DS

P1

FIRST ISSUE

03/04/25

SC

DS

DS

REVISION

DETAILS

DATE

DRAWN

CHECK

APPRO

CLIENT

BEACON FEN ENERGY PARK LTD

PROJECT

BEACON FEN ENERGY PARK

DRAWING TITLE

FIGURE 6.32  
VEGETATION REMOVAL PLAN  
(Sheet 25 OF 26)

DRG No.

ST19595-461

REV

5

SUIT. CODE

DRG SIZE

A1

SCALE

1:1,500

DATE

03/04/2025

DRAWN BY

SC

CHECKED BY

DS

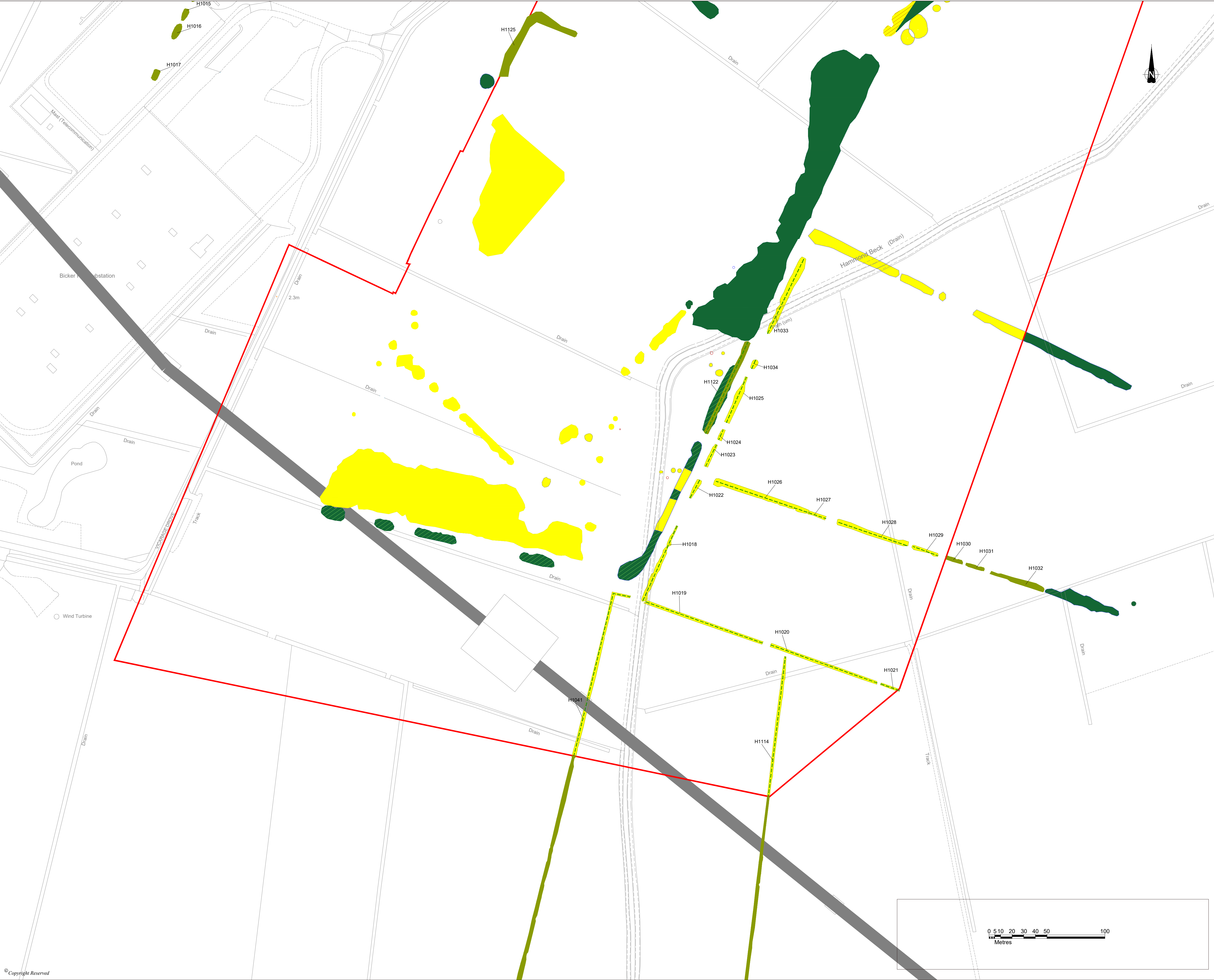
APPROVED BY

DS

wardell  
armstrong

PART OF SLR





DO NOT SCALE FROM THIS DRAWING

KEY

DCO Order Limits

Existing Trees / Vegetation

Existing Hedgerows to be retained and enhanced

Important Hedgerow

Proposed Hedgerow

Existing Ponds / Waterbodies

Proposed Fence

Proposed Access Track

Root Protection Area

Existing Vegetation to be potentially removed

Vegetation in highway outside the Applicant's control (Bicker Fen Substation)

Vegetation to be potentially temporarily removed and then reinstated (Bicker Fen Substation)

Overhead HV electricity

Notes:

Vegetation removal within Bespoke Access Route and Cable Route Corridor shown on this plan is based on the current scheme design and alignment. Final details to be confirmed at detailed design stage.

Excluding the DCO order limits, boundaries shown are inticative.

DCO order limits provided by Ardent Management on 04/02/2025.

Layout of Solar Panels taken from skyray drawing LCA-2023-01-BeaconFen\_Works Plan B Rev B dated 25/02/25.

© Crown Copyright and database rights 2025 Ordnance Survey AC0000808122

SHEET OVERVIEW  
(SCALE 1:125,000)

5	Revised proposed hedgerows. Attributes amended	11/12/25	MMB	DS	DS
4	Various amendments to attributes (colour, etc) Amendments to Bicker Fen Substation vegetation removals	03/12/25	MMB	DS	DS
3	QA Checks	16/10/25	SC	DS	DS
2	Retained vegetation amendment	07/10/25	SC	DS	DS
P1	FIRST ISSUE	03.04.25	SC	DS	DS

REVISION	DETAILS	DATE	DRAWN	CHECKD	APPRO

CLIENT

BEACON FEN ENERGY PARK LTD

PROJECT

BEACON FEN ENERGY PARK

DRAWING TITLE

FIGURE 6.32  
VEGETATION REMOVAL PLAN  
(Sheet 26 OF 26)

DRG No.	ST19595-461	REV	5	SUIT. CODE	
DRG SIZE	A1	SCALE	1:1,500	DATE	03/04/2025
DRAWN BY	SC	CHECKED BY	DS	APPROVED BY	DS

wardell  
armstrong

PART OF SLR

© Copyright Reserved  
N:\ST11895-SOLAR PV DCO BECKER FEN\03-DESIGN\AUTOCAD\ST11895-461-VEGETATION REMOVAL PLAN REV BECKER FEN SUBSTATION UPDATED.DWG